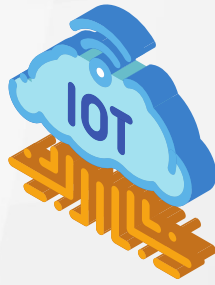


# YuDash<sup>®</sup> LYNX IoT Gateway



**Compatible with all IoT  
and compliance platforms**



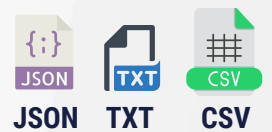
## Cloud Protocols



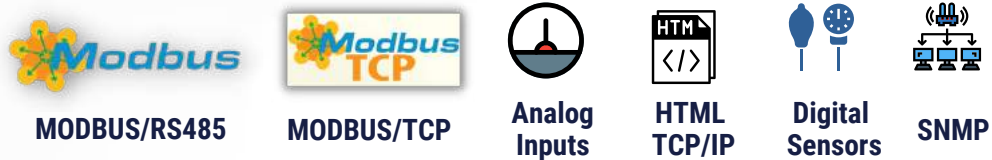
## Network Connectivity



## Payload Formats



## Industrial Protocols



On-device display for status & diagnostics

WiFi based easy configuration

Tick, Select & Configure  
No programming / scripting

YuReCon  
Remote Device Configuration

## IoT Gateway and Datalogger Features

Data scaling & Post processing

Inbuilt JSON payload formats library

Network failure support  
Local Storage & Back-fill

Simultaneous data push  
to multiple servers

Local data storage  
and logging (CSV/TXT)

Easy configuration  
file backup and restore

Generic TXT/CSV  
payload generator

Battery operated  
low power version

## Pre-Integrated with Global IoT Platforms..



## Multiple deployments across verticals



## Technical Specifications

Rated Input Supply	12V / 24V DC input.
Mounting	DIN Rail mounting and Wall mounting.
Dimensions	94 x 90 x 35mm
Enclosure	ABS Plastic Enclosure. IP 30 rating.
Display	OLED screen for status monitor and configuration
Environmental Conditions	Within IP67 enclosure for outdoor or indoor use.
Temperature	Operating : 0 °C to 60°C Storage: -10 °C to 70°C
Humidity	Upto 85% (non-condensing)
Weight	210 gram (approx)

## LYNX Part Numbers

Part No	WiFi	4G/LTE	Ethernet	RS-485	RTC & SD card	Analog (0-20mA)	Dual RS-485
<b>IoT Gateways</b>							
LYNX40	✓	✓		✓			
LYNX41	✓		✓	✓			
LYNX42	✓	✓	✓	✓			
<b>Data Loggers</b>							
LYNX48	✓	✓	✓	✓	✓	✓	✓
LYNX49	✓		✓	✓	✓	✓	✓

## Technical Features

Cloud Connectivity	1) WiFi, Ethernet, 4G Cellular (LTE) and Lorawan 2) India and EU version for 4G/LTE
MODBUS Communication	RS-485 MODBUS/RTU and MODBUS TCP/IP Upto 96 parameters/tags. Support for 16 Modbus slaves Modbus Write feature for PLC/Instrument settings update
Ethernet / RJ45 Jack	1) Connect to Internet / local LAN server 2) Modbus TCP/IP, HTML parsing, SNMP and OPC-UA 3) Configurable for Static or Dynamic IP
Hardware Interfaces	1) 8 channel Analog Inputs (0-20mA / 4-20mA) 2) Real Time Clock (RTC). Auto-synchronization with NTP 3) SD Card storage for local storage and network failure 4) Dual Channel RS-485 port 5) RS232 port for legacy instruments
Digital Sensor Interface	Inbuilt support for various I2C and One wire sensors Temperature, Humidity, Pressure, Distance, Lux
Software Features	1) Multiple payload (JSON & TXT) formats to support all IoT servers. 2) SSL (HTTPS) secure layer support 3) Input data post processing and scaling feature 4) Local data storage with SD card and RTC 5) Network failure handling and back-fill support
YuReCon	YuDash Remote Configuration: Configure deployed LYNX in field through YuDash cloud.



Product documentation  
<https://docs.yudash.com>

## YuDash LYNX Deployments



 YuDash

IoT | Industry 4.0

[www.yudash.com](http://www.yudash.com)

#startupindia

DPIIT recognized startup (DIPP87505)

[sales@yudash.com](mailto:sales@yudash.com)  
+91 9310404923  
+91 9871900565

YuDash Systems Pvt. Ltd.  
D-39, Meerut Road Indl. Area III,  
Ghaziabad (Delhi NCR), UP 201003  
India