

CATALOGUE & PRICE LIST 2021



Blebricks

Bricks to build your ideas



Blebricks: Platform and modular sensors for IoT

Blebricks consist in a set of modular "smart bricks": the BLE-B represents the fundamental brick, the heart of the system, and communicates via Bluetooth® with mobile Apps or with a remote server through our gateways. The other Bricks make up a set of sensors, actuators, power supply units and communication modules including Wi-Fi, Ethernet, and LP-WAN (*Low-Power Wide-Area network*) technologies. Each Blebrick implements a different function and the various Blebricks are assembled together (similarly to how it's done with LEGO®) according to the overall needed functionalities. Once connected, the Bricks recognize each other, self-configure and run immediately. Then, the prototype of the IoT device is built and is ready to work. A Software Suite, including a mobile App (*MakeApp*) and a Web Application (*Bricksboard*), allows the users to immediately verify the "Proof-Of-Concept" and/or to create own Apps using powerful coding tools (*App Inventor*), as well as Web pages or servers for the IoT (*Internet of Things*) in a few minutes. Developer libraries/SDKs and APIs are also available.

For more information, please refer to our [web page](#).

Blebricks: instant prototyping and industrialization

Blebricks technology allows anyone, regardless of their technical knowledge, to instantly create their connected smart devices, to perform functional tests and to transform them into products, drastically reducing (90%) development times and costs. No wirings, no code, no expertise required: just stack your functions/Blebricks each one on the top of the other. There is just one limit: your imagination!

Blebricks technology represents a disruptive innovation in the market, as it introduces for the first time the concept of "Instant Prototyping". The instant prototyping is achievable through a series of small, elementary intelligent bricks capable of self-configuring when connected to each other. Unlike competing rapid prototyping technologies, it is also designed to make the industrialization phase more efficient, or to transform the prototype into a product, optimizing costs, performances, and power consumption. Thus, the other fundamental point concerning our offer consists in an efficient turnkey industrialization service (Fast Route to Production) that competing technologies do not and cannot offer. Last but not least, the ultra-low-power consumption of Blebricks technology makes it suitable for portable and wearable or for long lasting batteries applications.

We aim to support the customer from the initial concept to the realization of his own product, eliminating all the barriers along the development process, including the development of the first prototype, the Proof-of-Concept demonstration, the industrialization, production, and certification. The phases following the Proof of Concept are all included in our "Fast Route to Production" service. As a matter of fact, Blebricks allow to go to production with less than a month and with a few thousand Euros of development costs, including CE certification. The overall saving in development cost and time is significant (about 90%).

The application fields are practically unlimited. We are currently operating successfully in the following sectors: precision agriculture, nursery, logistics and transport, safety in the workplace, home automation, wellness and well-being, healthcare, environment, cultural heritage, and education.



[Contact us](#) directly to find out more.

Blebricks Family

Communication modules

BLE-B



The **BLE-B** is a basic Brick natively communicating through **Bluetooth® Low Energy v4.2/5.x** (optionally also as NFC Tag), equipped with an **ARM® Cortex®-M4 32-bit processor** (more [here](#)).

Price and availability:

EXPERT Version: € 21,41

BLE 5.0 with LE Coded (long distance)

EXPERT Version: € 26,19

ELITE Version available in all our Kits

ESP



The ESP Blebrick is a flexible Multi-Functional customizable brick integrating a powerful ESP32 module. It can be used to provide the following functionalities:

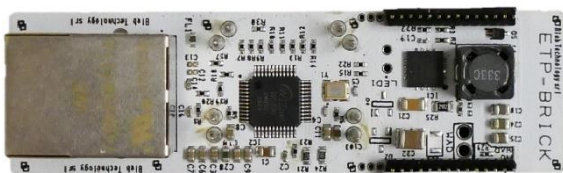
- **Wi-Fi communication** (with Smartconfig®)
- **BLE/Wi-Fi Gateway** (with BLE-B)
- **EDGE computing** (Pre-processing) programmable with Arduino IDE
- **Green Pass and barcode reader** (with ESP-BCR shield)
- **CAM module** (with ESP-CAM shield)
- **SD Memory module** (with ESP-SD shield)
- **Other Advanced functionalities** under request (more [here](#)).

Price and availability:

EXPERT version € 21,11

ELITE Version available in all our Kits

ETP



The ETP Blebrick is a communication and power supply Blebrick that integrates an **Ethernet** communication module and a power-supply solution to work as IEEE® 802.3af compliant Class 1/Class 2 Powered Devices (PDs) in a Power-over-Ethernet (**PoE**) system. It shall be used with the ESP Brick to provide Ethernet connectivity or to build a Wi-Fi/Ethernet gateway (more [here](#)).

Price and availability:

EXPERT version € 77,56

ELITE Version available in all our Kits

3D-Flex: housing per GW-ESP/EP: € 22,90

SFX



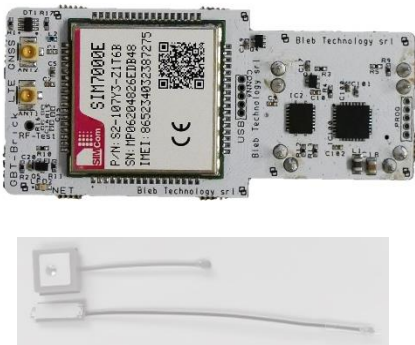
The **SFX** Blebrick is a communication module supporting **Sigfox** LP-WAN (*Low Power Wide Area Network*), allowing real-time remote access to the data coming from local Blebricks sensors (more [here](#)). The SFX Brick is sold as an Add-On kit together with the antenna. (more [here](#)).

Price and availability:

EXPERT SIGFOX Add-On: € 36,46

ELITE SIGFOX Add-On: € 39,99

GBT

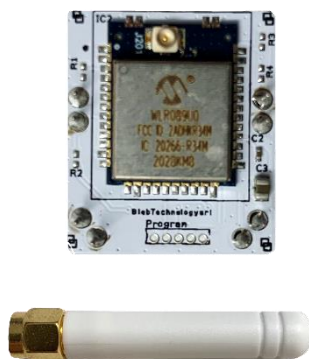


GBT Brick is a multifunctional LP-WAN module that supports both **NB-IoT** and LTE CAT-M1 (eMTC) over 4G network and **GSM/GPRS (SMS)** over 2G network. It is also equipped with a **GNSS** module (GPS, GLONASS and BeiDou/Compass, Galileo, QZSS) for use in outdoor location applications. The GBT Brick is sold as an Add-On kit together with the NB-IoT and GPS antenna. (more [here](#)).

Price and availability:

EXPERT NB-IoT Add-On: € 69,99

LRW



The **LRW** Blebrick is a LP-WAN communication module operating in the ISM-868 MHz band and supporting the **LoRaWAN®** technology for a bidirectional communication with a remote server. The LRW Brick is sold as an Add-On kit together with the antenna. (more [here](#)).

Price and availability:

EXPERT LoRaWAN® Add-On:
€ 46,37 (available Feb 2022)

Environmental sensors

ENV

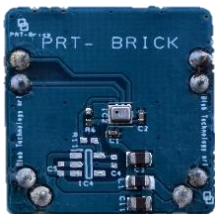


The **ENV** Blebrick is an ultra-low power environmental sensor that integrates **gas (VOC)**, **temperature**, **humidity**, and **pressure sensors** that also estimates the indoor **air quality index (IAQ)**.
(more [here](#)).

Price and availability:

EXPERT Version: € 33,08
ELITE Version available in Environment, Advanced and Top Kit

PRT

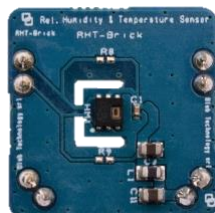


The **PRT** Blebrick integrates an absolute **barometric pressure** sensor, together with a **temperature** sensor.
(more [here](#))

Price and availability:

EXPERT Version: € 14,39
ELITE Version available in Environment, and Top Kit

RHT



The **RHT** Blebrick integrates a relative air **Humidity** sensor and a **temperature** sensor.
(more [here](#))

Price and availability:

EXPERT Version: € 17,70
ELITE Version available in Environment, Top Kit

UVA



The **UVA** Blebrick integrates an **UV-A radiation** sensor, allowing calculation of the **UV Index**.
(more [here](#))

Price and availability:

EXPERT Version: € 13,39
ELITE Version available in Environment, Top Kit

CLT



The **CLT** Blebrick includes an **infrared (IR) contact-less temperature sensor** that measures both the environment and the object temperature. (more [here](#))

Price and availability:
EXPERT Version: € 59,83

RGB



The **RGB** Blebrick is a light sensor capable of detecting **RGB colours and white light intensity**. (more [here](#))

Price and availability:
EXPERT Version: € 12,20
ELITE Version available in Environment, Top Kit

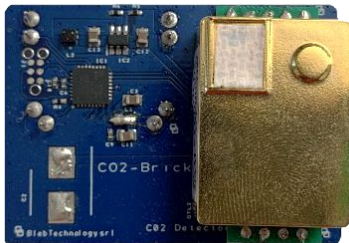
OAQ



The **OAQ** Blebrick measures **Ozone (O₃) and (Nitrogen Oxides) NO_x** and calculates the **Total Outdoor Air Quality (AQI)** index according to the US Environmental Protection Agency (**EPA**). (more [here](#))

Price and availability:
EXPERT Version: € 27,75)

CO2



The **CO2** Blebrick measures the ppm of **CO2** in the air, with good selectivity, non-oxygen dependency and long life and recalibrates daily with exposure to fresh air.

(more [here](#))

PMX



The **PMX** Blebrick is an optical sensor for small dust detection and particles concentration indication (**PM2.5 and PM10**). It is also able to detect smoke indoor or outdoor.

(more [here](#))

Price and availability:

EXPERT Version: € 77,26

SMS



The **SMS** Blebrick is a multifunctional sensor able to act as **resistive sensor to measure the soil moisture** and as **capacitive sensor to measure levels** of water, powders, and **presence** of any other dielectric including human fingers, animals etc.

(more [here](#))

Price and availability:

EXPERT Version: € 15,84

ELITE Version available in Environment, Top Kit

CHT



The **CHT** Blebrick is an high accuracy, large range, low power **CO₂ sensor**, which also measures **Relative Humidity** and **temperature**.
(more [here](#))

Price and availability:

EXPERT Version: € 99,53)
ELITE Version (available for custom kits)

PTX



The **PTX** Blebrick is an accurate resistance-to-digital converter optimized for platinum resistance **temperature detectors (RTDs)**, such as **PT100** and **PT1000** (RTDs not included)
(more [here](#))

Price and availability:

EXPERT Version: € 25,36)
ELITE Version (available for custom kits)

MIC



The **MIC** Blebrick includes a microphone to measure the environmental acoustic noise

Price and availability:

EXPERT Version: € 21,02
(Available from Apr 2022)

Inertial sensors

IMU



The **IMU** Blebrick is a 9-Axes inertial sensor integrating triaxial **gyroscope**, **accelerometer** and **magnetometer**, also providing absolute orientation values. (more [here](#))

Price and availability:

EXPERT Version: € 28,39
ELITE Version available in Motion, Advanced, Top Kit

AMG

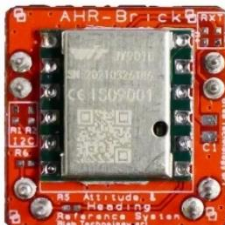


The **AMG** Blebrick is a 9-Axes inertial sensor integrating triaxial **gyroscope**, **accelerometer** and **magnetometer**. (more [here](#))

Price and availability:

EXPERT Version: € 28,16
ELITE Version (available for custom kits)

AHR



The **AHR** Blebrick is a 10-Axes inertial sensor integrating triaxial **gyroscope**, **accelerometer** and **magnetometer**, and **Atmospheric Pressure** also providing high accuracy absolute orientation values (0.1°) (more [here](#))

Price and availability:

EXPERT Version: € 89,40
ELITE Version (available for custom kits)

ACC



The **ACC** Blebrick is a **3-Axes acceleration sensor** that also **detects impacts, activity, and orientation changes**. (more [here](#))

Price and availability:

EXPERT Version: € 13,44
ELITE Version (available for custom kits)

Other sensors

CMS



The **CMS** Blebrick is a sensor that measures **direct DC currents and voltages from 0V to 26V**, and also calculates the power.

(more [here](#))

Price and availability:

EXPERT Version: € 17,78

RMS



The **RMS** Blebrick - a variant of the CMS – is a sensor that measures the **RMS - root mean square - value of alternating currents** in low voltage applications. With an **external probe** that can be provided under request, it can also be used to **measure 220V-360V AC currents**.

(more [here](#))

Price and availability:

EXPERT Version: € 17,78

VMS



The **VMS** Blebrick - a variant of the CMS – is a sensor that measures **Differential Voltage** between two electrodes and is suitable to interface **Bridge sensors**, such as **strain, deformation, pressure, displacement** ones, with an accuracy of 10uV.

(more [here](#))

Price and availability:

EXPERT Version: € 17,78

MAG



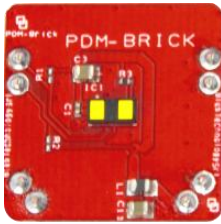
The **MAG** Blebrick is a 3-Axes magnetic field sensor that allows the detection of weak magnetic fields such as Earth's MF.

Price and availability:

EXPERT Version: € 10,10

ELITE Version (available for custom kits)

PDM



The **PDM** Blebrick is a **laser ranging sensor** with accurate and fast ranging, allowing distance measurement up to 4,5 m, **presence detection and flow monitoring**.

(more [here](#))

Price and availability:

EXPERT Version: € 21,25

ELITE Version available in Motion, Top Kit

IRR



The **IRR** Blebrick is a 38 kHz infrared sensor able to **receive coded IR** transmissions **up to 30 m** of distance. It works with the **IRT Transmitter Brick**

(more [here](#))

Price and availability:

EXPERT Version: € 18, 55

ELITE Version available in Top Kit

UWS



The **UWS** Blebrick is microWave sensor able to **detect movement** and hence presence in the range of 4-5 mt

(more [here](#))

Price and availability:

EXPERT Version: € 14,31

ELITE Version (available for custom kits)

USS



The **USS** Blebrick is a miniature, ultra-low power, **long-range (5m)** ultrasonic Time-of-Flight (ToF) **range sensor**, with customizable Field of View (FoV)

(more [here](#))

Price and availability:

EXPERT Version: € 58,93)

ELITE Version (available for custom kits)

(Available from Gen 2021)

CAP

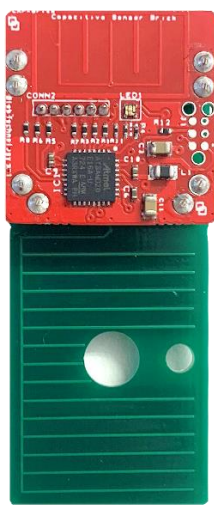


The **CAP** Blebrick is a **capacitive touch sensor** that can also be used with different **Add-Ons to build other specific sensors** such as leaf wetness, insect detector ones, keypads,... (more [here](#))

Price and availability:

EXPERT Version: € 17,27
ELITE Version available in Interaction, and Top Kit

TRP



The **TRP** Blebrick is a variant of the CAP Brick with a dedicated shield to **detect the presence of insects** such as Olive Fly, Flavea Dorata in precision agriculture, and Iso Cockroaches and other insects in public and private buildings. (more [here](#))

Price and availability:

EXPERT Version: € 27,41

WET



The **WET** Blebrick is a variant of the CAP Brick with a dedicated shield to measure the **wetness of leaves** in precision agriculture, and also the presence of water leakages in public and private buildings. (more [here](#))

Price and availability:

EXPERT Version: € 29,20

GPS



The **GPS** Blebrick is a multi-**GNSS receiver** module with embedded chip antenna, supporting **GPS, GLONASS, BeiDou, Galileo and QZSS** navigation systems. It shall be used outdoor in open environments.

(more [here](#))

Price and availability:

EXPERT Version: € 32, 81

ELITE Version (available for custom kits)

VID



The **VID** Blebrick is a flexible Multi-Functional customizable Blebrick integrating a powerful ESP32 module with a CAM and a SD card memory

It can be used to provide the following functionalities:

- **Wi-Fi communication** (with Smartconfig®)
- **Video and Picture recording**
- **SD Memory Card** for data storage
- **FTP transfer of data**
- Advanced functionalities such a Video streaming, Image recognition (under request)

Price and availability:

EXPERT version € 39,92

Actuators

BUZ



The **BUZ** Blebrick is an actuator brick including a **buzzer and a two-colour LED** for audio-visual signalling.
(more [here](#))

Price and availability:

EXPERT Version: € 22,91
ELITE Version available in Interaction, Advanced, Top Kit

VBR



The **VBR** Blebrick is an actuator brick including a **vibration motor** for tactile signalling.
(more [here](#))

Price and availability:

EXPERT Version: € 18,70
ELITE Version available in Interaction, Advanced, Top Kit

WPL



The **WPL** Blebrick is an actuator brick including a **white high-power LED** for visive signalling.
(more [here](#))

Price and availability:

EXPERT Version: € 17,84
ELITE Version available in Interaction, Advanced, Top Kit

IRT

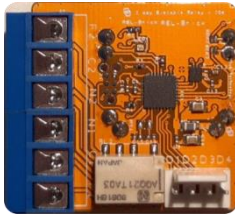


The **IRT** Blebrick is a 38 kHz infrared **coded transmitter featuring an omni-directional IR LED**. By means of an appropriate stenoscopic hole in the housing the transmission can achieve a high directivity. It works with the **IRR receiver Brick**
(more [here](#))

Price and availability:

EXPERT Version: € 16,89
ELITE Version available in Top Kit

REL



The **REL** Blebrick is an actuator brick including a **bistable relay**, handling up to 60W and featuring two digital inputs and two digital outputs.
(more [here](#))

Price and availability:
EXPERT Version: € 30,91

Auxiliary modules

EPR



The **EPR** Blebrick is useful to **program the ESP Brick**, i.e. for **edge processing** application through the **Arduino IDE**.

Price and availability:
EXPERT Version: € 20,55

Power supply modules

RPS



The **RPS** Blebrick is a **rechargeable power supply** module including a **80 mAh Li-Po battery** with a **micro-USB (Type B)** connector.
(more [here](#))

Price and availability:

EXPERT Version: € 28,18
(battery LiPo 80mAh included)

ELITE Version available in Starter, Interaction, Environment, Motion, Advanced, Top Kit

SPS



The **SPS** Blebrick is a power supply module brick including a **coin cell (CR1632) battery holder**.
(more [here](#))

Price and availability:

EXPERT Version: € 7,83 (no *ELITE* Version)

BPS



The **BPS** Blebrick is a power supply unit suitable for industrial applications (12/24V) able to withstand many different **cabled power sources with voltages ranging from 3,6 V to 32 V**
(more [here](#))

Price and availability:

EXPERT Version: € 18,64

XPS



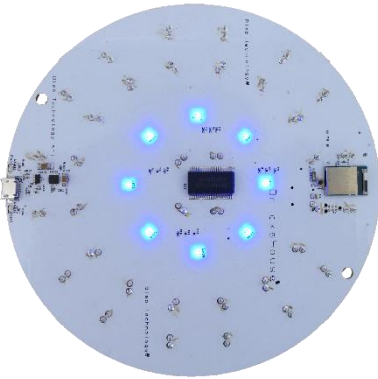
The **XPS** Blebrick supports **AA batteries with any chemistry (alkaline, lithium-thionyl chloride etc.)** and any **additional source from 0,8 Vdc to 6 Vdc** for any possible use. In addition, by bridging 0-ohm resistors on the PCB, the brick can be used **with solar panels and rechargeable batteries**.
(more [here](#))

Price and availability:

EXPERT Version: € 27,82
(Battery Excluded)

Mounting bases

BRICKSHOUSE



The Brickhouse is a **nine-position circular mounting base** that allows multiple Blebricks to be connected on a single horizontal platform. The Brickhouse features **8 RGB LEDs** arranged circularly to allow for dramatic lighting effects. It also already includes the **RPS power brick with a 1000mAh rechargeable battery** to allow for longer battery life. (More [info](#))

Price and availability:

EXPERT version: € 79,98

IB4



The **IB4** is a **four-positions mounting base** allowing connections of multiple Blebricks on a horizontal platform.

(More [info](#))

Price and availability:

EXPERT Version: € 11,64

IB3



The **IB3** is a **three-positions mounting base** allowing connections of multiple Blebricks on a horizontal platform.

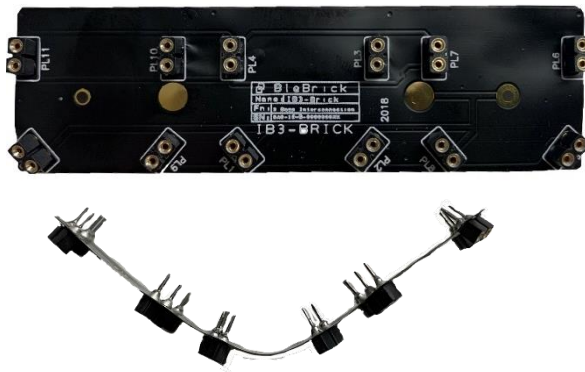
(More [info](#))

Price and availability:

EXPERT Version: € 7,23

ELITE Version available in Interaction, Environment, Advanced, Top Kit

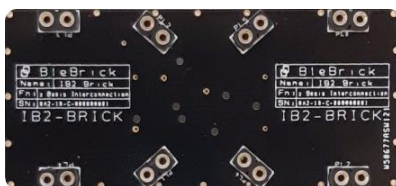
IB3 Flex



The **IB3 Flex** is a **three-positions flexible mounting base** allowing connections of multiple Blebricks on a horizontal platform. (More [info](#))

Price and availability:
EXPERT Version: € 16,45

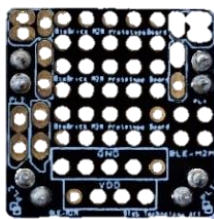
IB2



The **IB2** is a **two-positions mounting base** allowing connections of multiple Blebricks on a horizontal platform. (More [info](#))

Price and availability:
EXPERT Version: € 5,89
ELITE Version available in Motion, Top Kit

PCB



The **PCB** Blebrick is a single-position mounting base including **through-hole pads**. It can be used to **add discrete components** for custom interfaces. (More [info](#))

Price and availability:
EXPERT Version: € 5,27
ELITE Version available in Interaction, Environment, Motion, Advanced, Top Kit

FIX



The **FIX** Base is a mounting support for the *ELITE* Blebricks. It is useful to fix the Blebricks to different **surfaces with magnet, mounting holes and bracelet slit**.

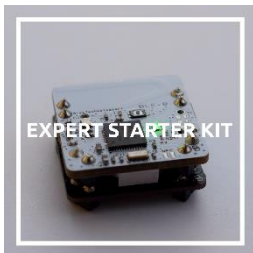
Price and availability:
ELITE Version available in Interaction, Environment, Motion, Advanced, Top Kit

Buying single Blebricks separately from our standard kits, requires an additional handling fee of € 15 for each Box (every Box can include max 20 different Blebricks)

Kits

Expert Kits

Our Expert Kits contain Blebricks in naked version (naked circuit board with components in sight)



The Expert Starter Kit

Includes:
1 naked **BLE-B** and
1 naked **SPS**.

Available [here](#) for 34.01€



The Expert Motion Kit

includes: **BLE-B, IMU, PDM, PCB, IB2, XPS** and **RPS**.

Available [here](#) for 147.35€



The Expert Environment Kit includes: **BLE-B, ENV, PRT, RHT, UVA, SMS, IB3, IB2, PCB, XPS** and **RPS**.

Available [here](#) for 199.34€



The Expert Interaction Kit includes: **BLE-B, CAP, PCB, VBR, BUZ, WPL, REL, SPS, RPS** and **IB2**.

Available [here](#) for 185.35€



The Expert Advanced Kit includes: **BLE-B, IMU, ENV, VBR, BUZ, WPL, IB3, PCB, IB2, XPS** and **RPS**.

Available [here](#) for 225.86€



The Expert Top Kit includes: **BLE-B, ENV, PRT, RHT, UVA, RGB, RPS, XPS, IMU, PDM, CAP, IRR, PCB, VBR, BUZ, WPL, IRT, REL, SMS, IB2**, and **IB3**.

Available [here](#) for 404.25€



The Expert Sigfox Add-on includes 1 naked **SFX** and **monopole antenna** and can be added to any other Blebricks kit.

Available [here](#) for 36.46€

Elite Kits

Our Elite Kits contain Blebricks in packaged version (each one with its own plastic housing)



The **Elite BLE-Beacon** consists of 1 packaged BLE-Beacon.

Available [here](#) for 22.49€



The **Elite Sigfox Add-on (ESF-1906)** includes 1 packaged **SFX** with a monopole antenna and can be added to any other Blebricks kit.

Available [here](#) for 39.99€



The **Elite Starter Kit** includes 1 packaged **BLE-B** and 1 packaged **RPS**.

Available [here](#) for 60.59€



The **Elite Motion Kit (EMK-1906)** includes: **BLE-B, IMU, PDM, PCB, IB2, RPS, and a FIX**.

Available [here](#) for 150.40€



The **Elite Interaction Kit** includes: **BLE-B, CAP, PCB, VBR, BUZ, WPL, RPS, IB3** and a **FIX**.

Available [here](#) for 186.82€



The **Elite Environment Kit** includes: **BLE-B, ENV, PRT, RHT, UVA, SMS, IB3, IB2, PCB, RPS** and a **FIX**.

Available [here](#) for 218.39€



The **Elite Advanced Kit** includes: **BLE-B, IMU, ENV, VBR, BUZ, WPL, IB3, IB2, PCB, RPS** and a **FIX**.

Available [here](#) for 244.91€



The **Elite Top Kit** includes: **BLE-B, ENV, PRT, RHT, UVA, RGB, RPS, IMU, PDM, CAP, REL, IRR, PCB, VBR, BUZ, WPL, IRT, SMS, IB2, IB3** and a **FIX**.

Available [here](#) for 459.30 €

Our ELITE and EXPERT KITS and Blebricks are fully compatible and can work and be assembled together

3D Flex

Our 3D Flex service allows you to get personalized housings for your Expert Blebricks.

The main features are:

- Pre-assembled devices with 3D-FDM printed housings
- Strong housings suitable to outdoor locations and extreme climate conditions (-40°C + 85°C)
- Customizable colours
- Customized printing with company logo



3D-FDM/X: housing for XPS version with AA alkaline or lithium-thionyl chloride battery, suitable for outdoor applications

Price: € 22.50



3D-FDM/R: housing for RPS version with Li-Po/Li-Ion micro-USB (Type B) battery charger.

Price: € 17.80

Extras

Custom colours: € 2,80 (min. 10 pcs)

Customized printed logo: € 8,90 (min. 100 pcs)

Gateways

Our Gateways are made to connect Protector, BLEBeacons and Blebricks series devices to the internet and then exchange data with a Remote server. For these devices the local communications towards Gateways and Smartphones are made through BLE4.2 (5.0). In order to fully exploit the potential of the system we recommend the use of Android platforms. For Apple users it is also possible to activate the data transmission in iBeacon format.

Generally speaking, Real Time communication between the Gateways and the server takes place through the MQTT service. The operation of retrieving the logs in the Protectors is managed automatically by our Gateways, which autonomously select the Devices with available logs present within the range of action of the BLE, connect and send them to the predefined server. The communication distance between the gateway and the Protector in advertising mode (Real Time) is about 10 m, due to reduced transmission power. The download of the logs from the gateway takes place automatically in connection mode. For Beacons and BLEbricks in general the communication distance is up to 30m in the air. For further information please refer to the specification documents of the gateways, available on request.

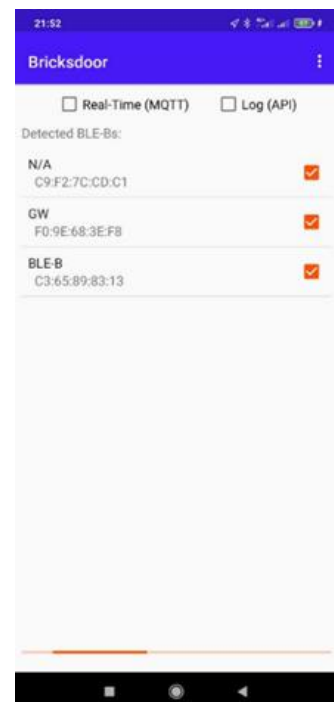


Our gateways can be of two types, HW and SW:

- **HW Gateway**
- **SW Gateway** for Smartphone: any Android Smartphone can be used as a Gateway by installing and activating our Bricksdoor App.

The HW Gateways can be configured through any browser, while the SW Gateways are configured through the special setting menu of the Bricksdoor App. For developers are also available Java libraries with the sources of the App MyProtector as an example, in addition to the manual with the description of the protocol used for encoding data and commands. There are also generic APIs in PHP that can be used with our technology.

The HW Gateways can be supplied with all the sensors available with the Blebricks family, including presence sensors, environmental sensors such as air quality, CO2 and Particulate (PM2.5, PM10).



Gateways GW-ESP are entirely made in HW with proprietary Firmware and are simply configured via Smartconfig® (local temporary web server).

- **Gateway GW-ESP** Wi-Fi, power supply USB, RT mode and Log
Price: € 39,81
- **Gateway GW-ESP/V** Wi-Fi, power supply 12-24V, RT mode and Log
Price: € 59,90
- **Gateway GW-ESP/P** Wi-Fi, power supply PoE, RT mode and Log
Coming soon (February 2021)
- **Gateway GW-ESP/EP** Wi-Fi and Ethernet, power supply PoE, RT modality and Log
Price: € 39,81



GW-ESP/EP

GW-ESP

Model	Communication	Power Supply	Price €
GW-ESP	Wi-Fi	USB	39,81
GW-ESP/V	Wi-Fi	5-9- 12-24V	39,81
GW-ESP/P	Wi-Fi	POE	77,30
GW-ESP/EP	Wi-Fi / Ethernet	POE	98,41

Click here for [more info](#) about our Gateways

All Prices are subject to changes and VAT excluded

Shipment costs are not included

CONTACTS

Bleb Technology S.r.l. - Via Ferrucci 131/d – 59100 Prato

Tel. +39 0574 1747003 – 393 3993 393

www.bleb.it – info@bleb.it

Follow us 

Software Suite

All the Software is free for our customers

MakeApp



Our intuitive **MakeApp** provides the fastest way to test the devices built using Blebricks, showing sensors data and allowing to configure a flexible if-this-then-that behavior. The Android version is available for free on [Google Play Store](#), and soon the iOS version will be rolled out on the App Store.

Bricksboard



It is fast and easy to design a custom web page for remote interaction with Blebricks using our on-line platform called **Bricksboard**. It is possible to create a custom panel for convenient visualization of sensors data and to configure web interactions such as sending of e-mails or Telegram messages upon Blebricks events.

Coding



Use our **MIT App Inventor** extension to develop new Blebricks compatible apps with the simplest approach: just connect blocks! This tool is suitable both for beginners who have no coding skills at all and for experts who want to set up a proof of concept in a moment.

Java SDK



Experts can exploit our **Java SDK** to build professional level mobile applications.

API



For a seamless integration with the data received on local servers, we provide an **API** together with PHP source files, to decode the data received through our LP-WAN Blebricks (Sigfox, LRW and NBT) or our Gateways